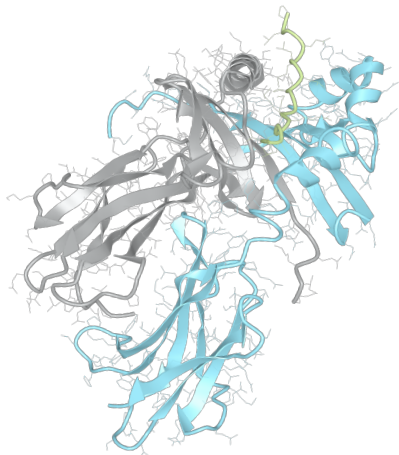


Product datasheet



sHLA– DPB1*18:01 DPA1*01:05

DPB1*1801, DPB11801, DPB1*18, DPB18
DPA1*0105, DPA10105, DPA1*01, DPA01

Serological Name	-
Peptide Load	Endogenous
Modification	Unmodified
Conjugation	Unconjugated
SKU	DPB11801/DPA10105

Product Description

Allele Name	DPA1*01:05 DPB1*18:01
HLA Class	HLA Class II
HLA Gene Locus	HLA-DP
Alternative Allele Name A Chain	DPA1*0105, DPA10105, DPA1*01, DPA01
Alternative Allele Name B Chain	DPB1*1801, DPB11801, DPB1*18, DPB18
Description	Recombinant, truncated Class II soluble Human Leukocyte Antigen (sHLA), naturally folded and glycosylated, loaded with endogenous peptides.
Serological Name	-
Serological Split	-
Allele Frequency [World Population]	
A chain	0.4%
B chain	2.0%

Associated products

[DPB11801/DPA10105bio](#)
[DPB11801/DPA10105pe](#)

Product Specification

Product name	HLA-DPB1*18:01/DPA1*01:05
HLA Species	Human
Host Cell Line Species	Mouse
Clone Designation	F11
Tail Specification	ZP
Peptide Load	Endogenous
Modification	Unmodified
Conjugation	Unconjugated
Complexity	Monomer
Protein Format	Recombinant, truncated, zipper-stabilized, soluble, non-modified, non-labeled, endogenously loaded
Storage Temperature	4°C (This product should be stored undiluted)
Form	Liquid
Concentration	1000.0 µg/ml
Formulation	PBS/0.02% Sodium Azide
pH	7.4
Purification Method	Affinity Chromatography
Grade	Research Use Only [RUO]
Authentication Verification	Sequence Based Typing

Protein Sequences

Alpha Chain Sequence	IKADHVESTYA AFVQTHRPTG EFMFEFDEDE MFYVDLDKKE TVWHLEEFQ AFSFEAQGGL ANIAILNNL NTLIQRSNHT QAANDPPEVT VFPKEPVELG QPNTLICHID KFFPPVLNVT WLCNGELVTE GVAESLFLPR TDYSFHKFHY LTFVPSAEDF YDCRVEHWGL DQPLLKHWEA QEPIQMPETT EVDGGGGGAQ LEKELQALEK ENAQLEWELQ ALEKELAQ
Beta Chain Sequence	RATPENYVYQ GRQECYAFNG TQRFLERYIY NREEFVRFDS DVGEFRAVTE LGRPDEEYWN SQKDILEEKR AVPDRMCRHN YELVGPMTLQ RRVQPKVNVS PSKKGPLQHH NLLVCHVTDF YPGSIQVRWF LNGQEETAGV VSTNLIRNGD WTFQILVMLE MTPQQGDVYI CQVEHTSLDS PVTVEWKAQS DSARSKVDGG GGAQLKKKL QALKKKNAQL KWKLQALKKK LAQ

Related Products

[DPB10501/DPA10202](#)
[DPB10401/DPA10201](#)
[DPB10402/DPA10103](#)
[DPB10201/DPA10103](#)

Applications

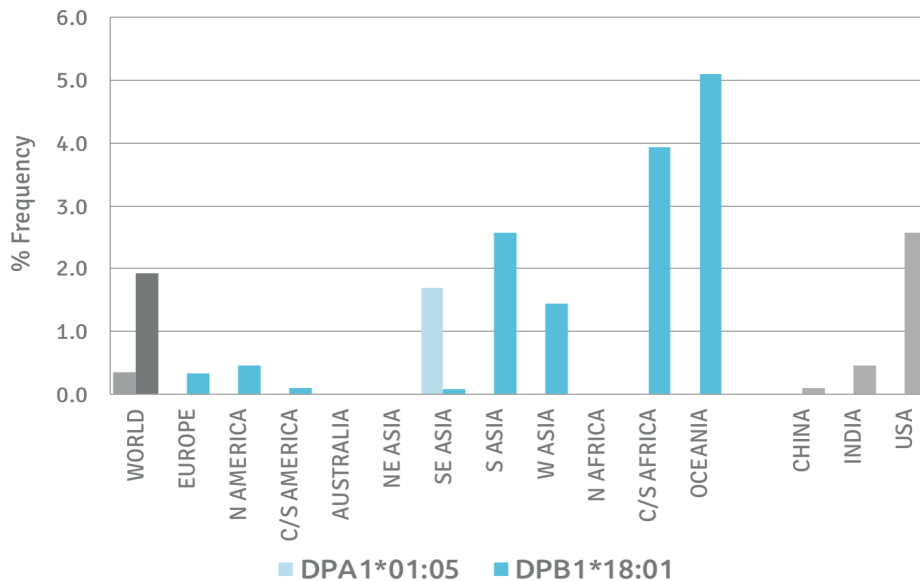
HLA Sandwich ELISAs
 HLA Direct ELISAs
 HLA-Sera Antibody Assays
 HLA Controls in ELISA Assays
 HLA Assay Standards
 HLA Blocking Assays
 HLA Neutralizing Assays
 HLA Competition Assays
 HLA Bead Assays
 HLA Immunization Procedures

Recommended Antibodies

-

Allele Frequency

Worldwide Allele Frequency



Please note:

ALL PRODUCTS ARE FOR RESEARCH USE ONLY. NOT FOR COMMERCIAL USE IN DIAGNOSTIC PROCEDURES.
 For more information, please visit our Policies section on our website. For licensing inquiries, please contact

licensing@hlaprotein.com

HLA Protein
 PURE PROTEIN LLC

